





HIF2 A40 Corridor

Stakeholder Briefing

Oxfordshire Transport and Access Group
August 2021




1




Content

- Overview
- Context
- HIF2 A40 Smart Corridor - design update
- Programme
- Q & A




2




Overview


- Major highways improvement scheme proposed along the A40 Corridor between East of Witney and Duke's Cut
- The planning application includes three schemes:
 - A40 Dual Carriageway Extension (3.2km)
 - Integrated Bus Lanes (6.5km)
 - Duke's Cut (600m)
- Single EIA and planning application
- EIA Scoping Opinion received April 2021
- Public engagement 10th May – 7th June 2021
- Planning application September 2021
- Determined by Oxfordshire County Council




3



Context



4




Context – Need for A40 Improvements

Current reality


- Heavily congested route for extended periods each day affecting all users.
- Reliance on low occupancy private vehicles for trip-making
- Long and unreliable bus journey times, discouraging patronage and operators from investing in services.
- Poor facilities and a lack of priority for walking and cycling as a means of travel

Required Intervention


- Align the A40 Corridor with national, regional and local imperatives of sustainable transport provision.
- Investment to unlock effective public transport and active travel solutions, significantly increasing travel choice and the carrying capacity of the route.
- Enable housing and economic growth aspirations.




5



Context – A40 Corridor Progress

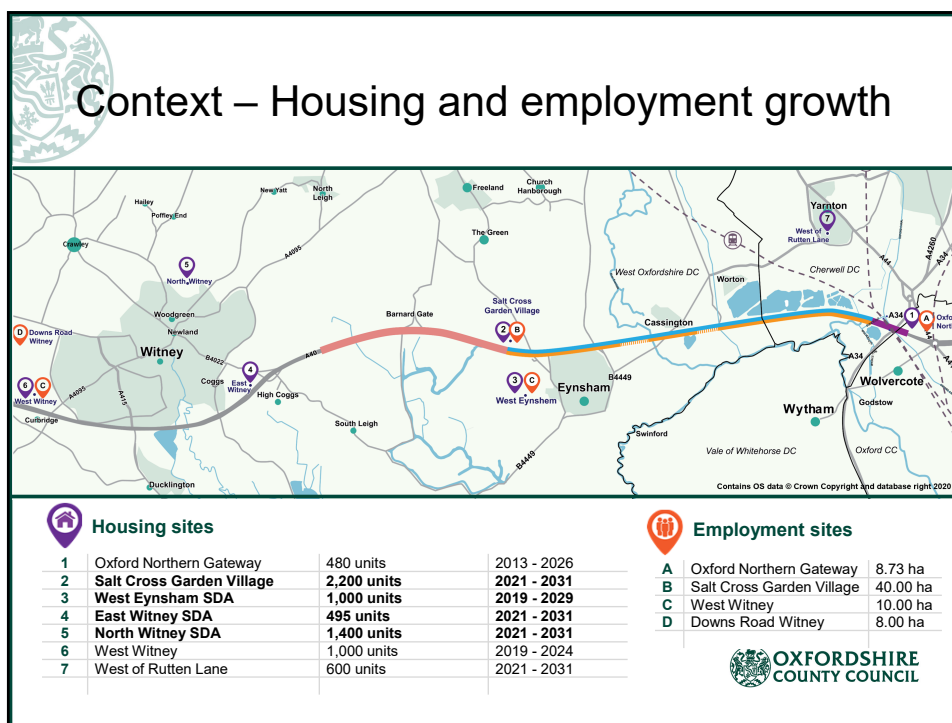


1	2	3	4	5	6
A40 Dual Carriageway Extension	Eynsham Park and Ride	A40 Integrated Bus Lanes	A40 Duke's Cut	Access to Witney	Oxford North
Planning submission September 2021.	Planning approved March 2021 ¹ .	Planning submission 2021.	Planning submission 2021.	Planning submission 2021	Planning approved December 2019 ² .



1 – Ref. R3.0057/19; 2 – Ref. 18/02065/OUTFUL

6



7

Context - A40 Transport Strategy Objectives

- Provide greater travel choice and encourage more use of bus, cycling and walking.
- Improve active travel and public transport accessibility and connectivity (to employment and public services).
- Deliver faster and more reliable bus journey times.
- Support major new housing and employment sites proposed in the West Oxfordshire Local Plan.
- Promote economic growth in Oxfordshire and creation of new jobs.
- Reduce carbon emissions and other pollutants associated with travel.

~~~~~

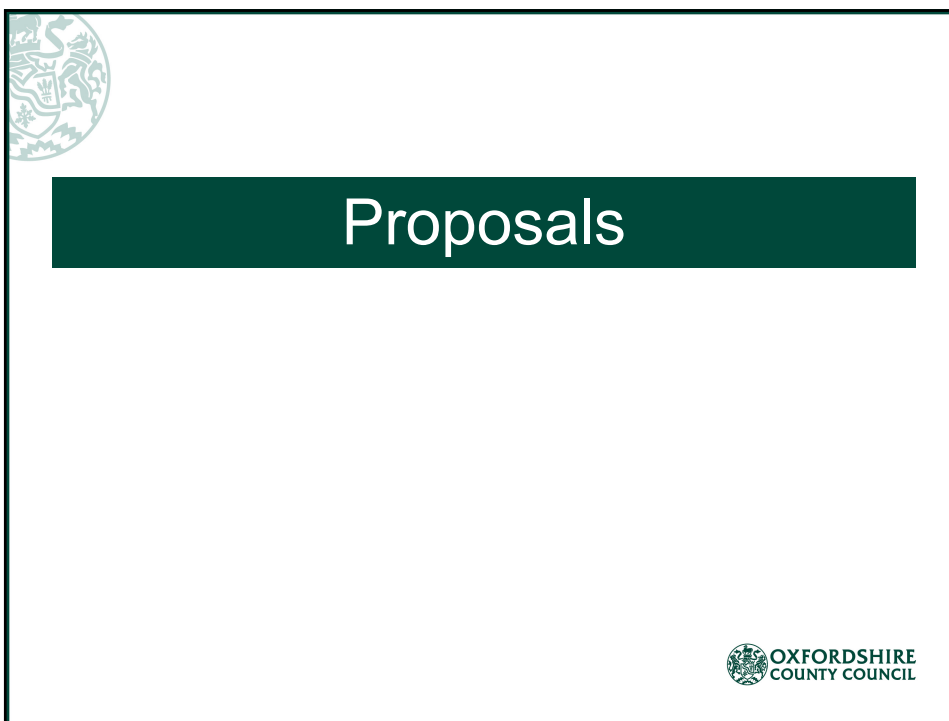
*Recognise that capital schemes emphasis is delivering infrastructure improvement that enables sustainable growth.*

*Success in ensuring major behaviour changes requires an ongoing, integrated programme of activities.*

**OXFORDSHIRE COUNTY COUNCIL**

8





9

**Project Update: Access to Witney (Shores Green)**

- Provisional funding of £7.2m secured from Growth Deal and S106. Currently in optioneering stage.
- End of Feasibility design stage. Preferred options now selected at a technical level and will be basis of public engagement.
- Next key milestones – aligned with those of HIF2;
  - Public engagement on preferred option – May / June 2021
  - Report to Cabinet on preferred options and funding package – July 2021
  - Planning applications – late Summer 2021
  - Report to Cabinet with resolution to CPO – late 2021

OXFORDSHIRE  
COUNTY COUNCIL

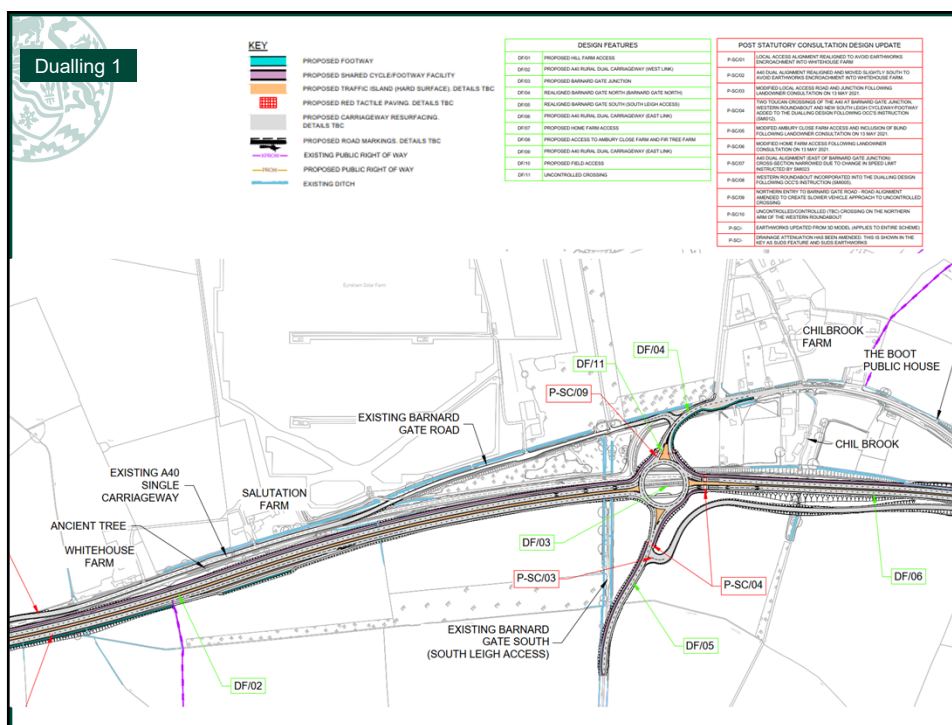
10

## A40 Dual Carriageway Extension

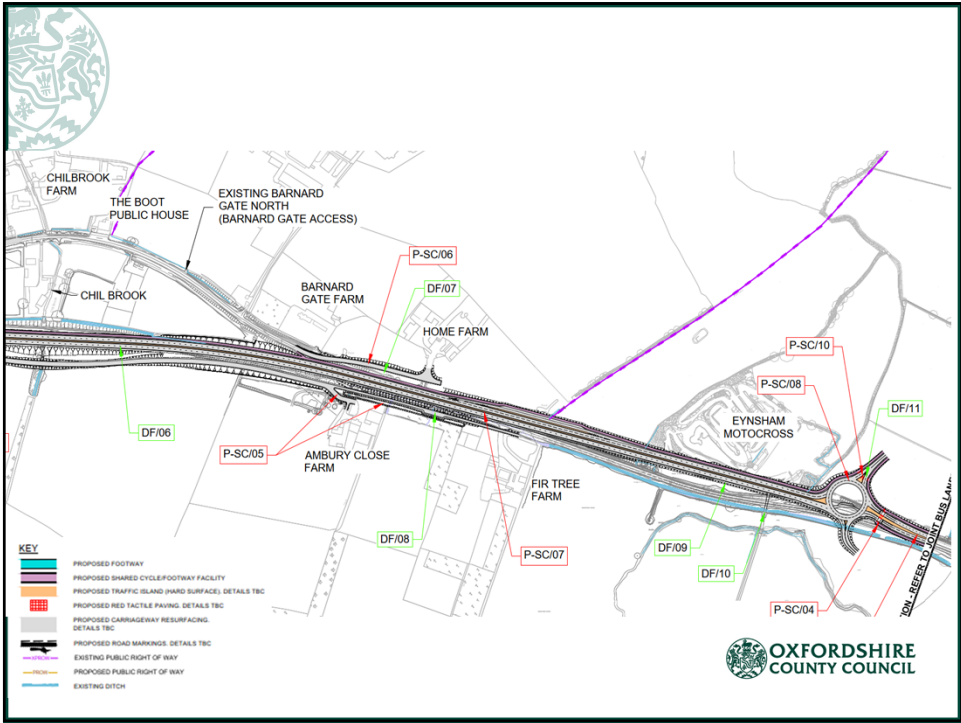
- Dualling approximately 3.2km of the A40 between Witney and the proposed Eynsham Park and Ride.
- Improved shared footpath and cycle paths along the A40 southside.
- New roundabout junction at the A40 Barnard Gate / South Leigh junction.
- Improve road safety by reducing the number of direct A40 access points.
- Reduced speed limit from Barnard Gate Westwards



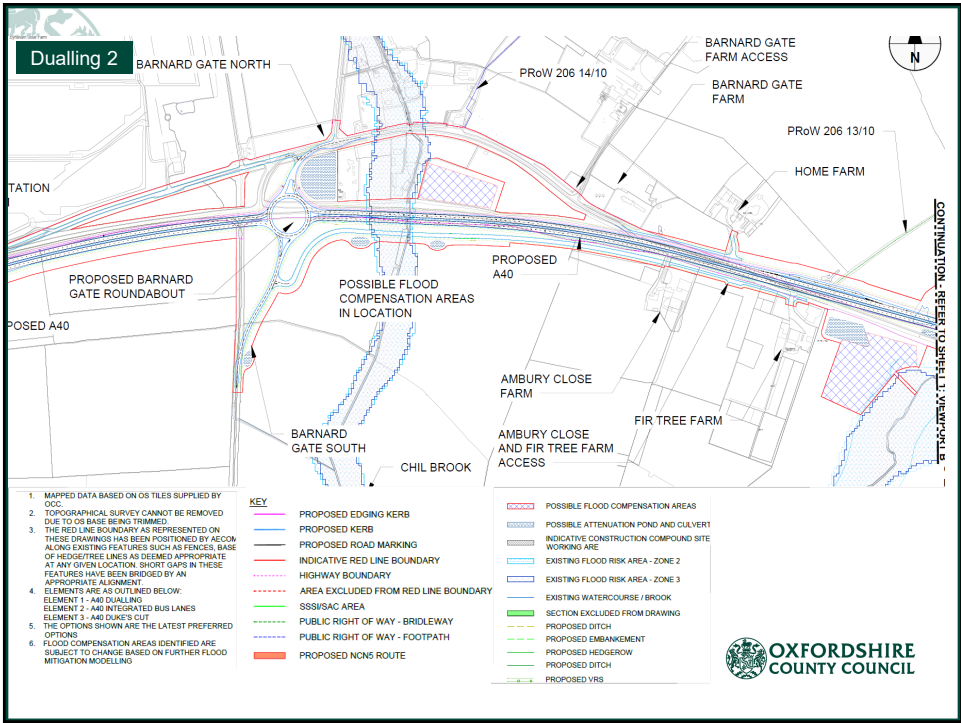
11



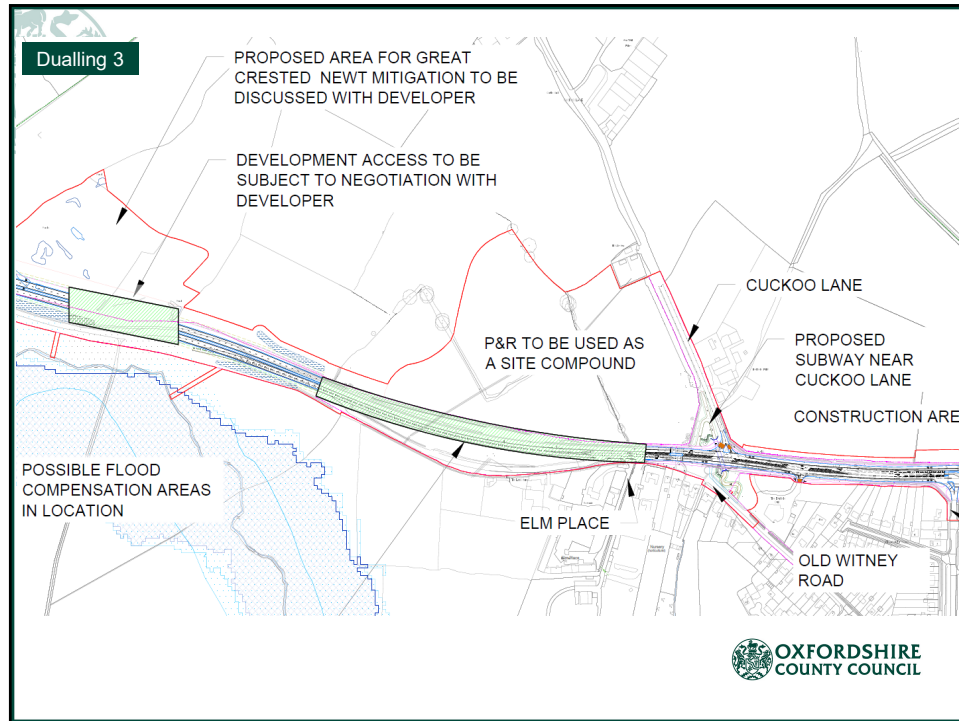
12



13



14



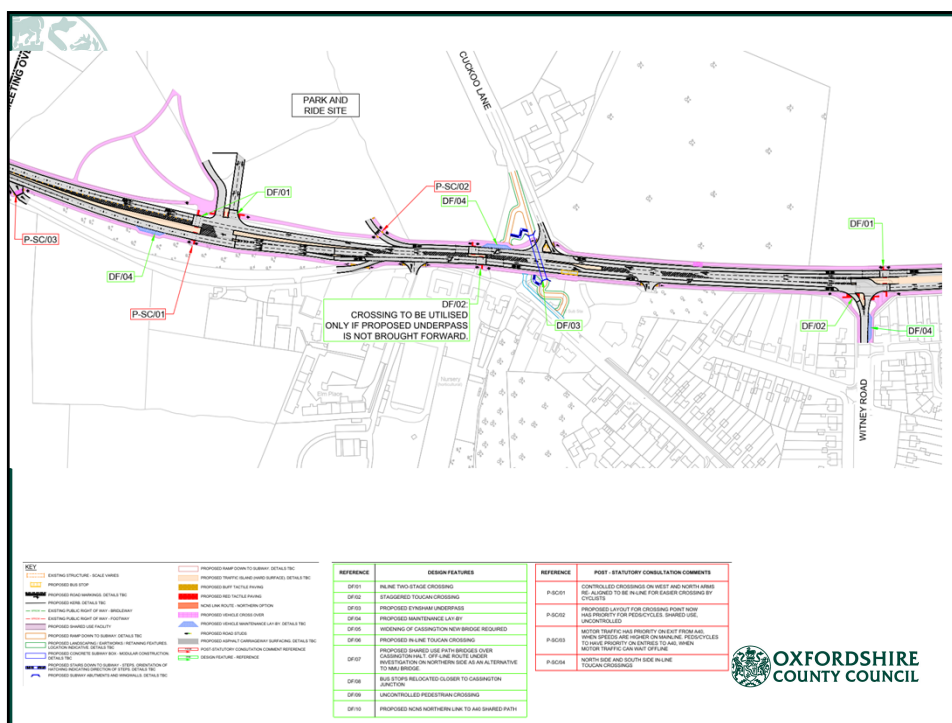
15

## A40 Integrated Bus Lanes

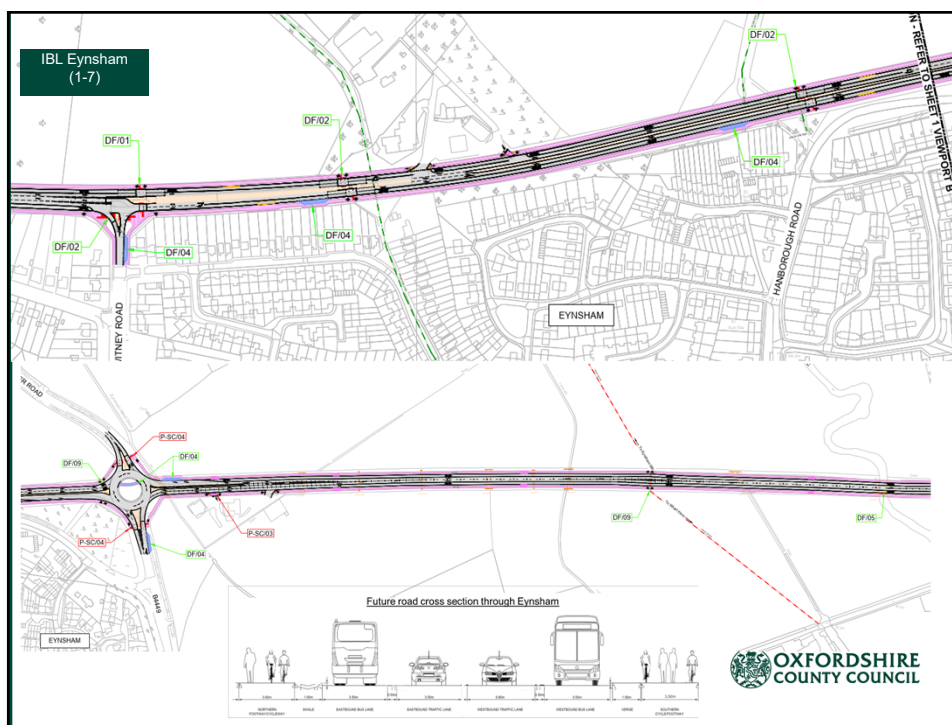
- 6.5km section of joint eastbound and westbound bus priority measures between the Eynsham Park and Ride and Duke's Cut.
- New signalised junction at the Park and Ride site with controlled pedestrian crossings and access point for the West Eynsham SDA.
- Cassington New Bridge widening by 3m on south and north sides.
- New shared use cycle/pedestrian bridges running parallel to Cassington Halt Bridge to the north and south.
- Junction alterations and improvements at Witney Road, Lower Road Roundabout and Cassington Signals.
- Potential pedestrian subway link underneath the A40 from Eynsham to the proposed Park and Ride.
- 40 mph speed limit

The Oxfordshire County Council logo is visible in the bottom right corner of the slide.

16

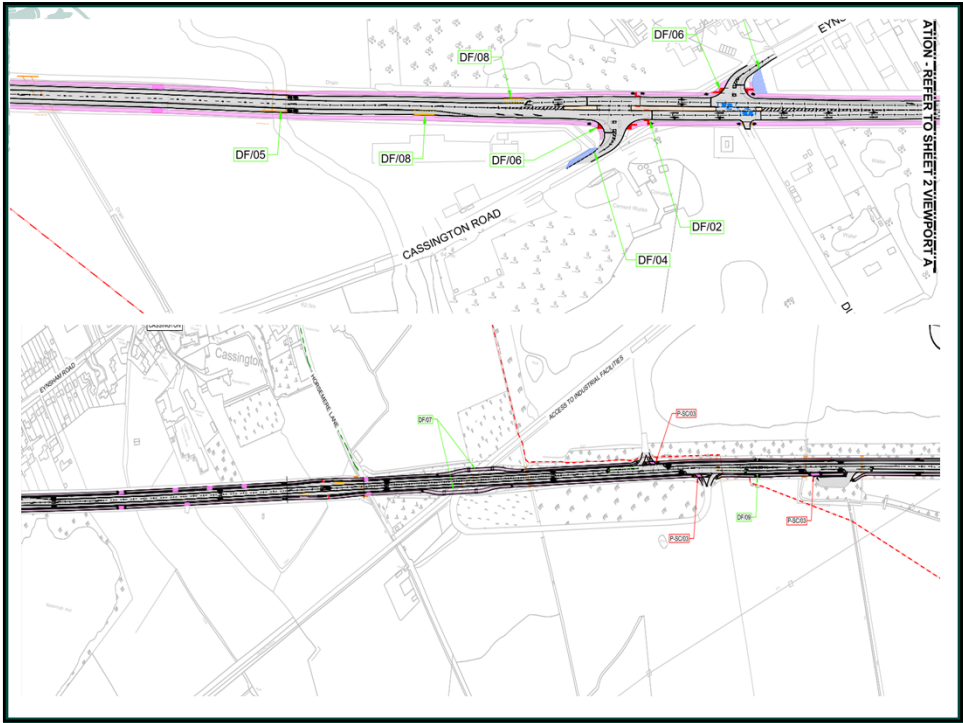


17

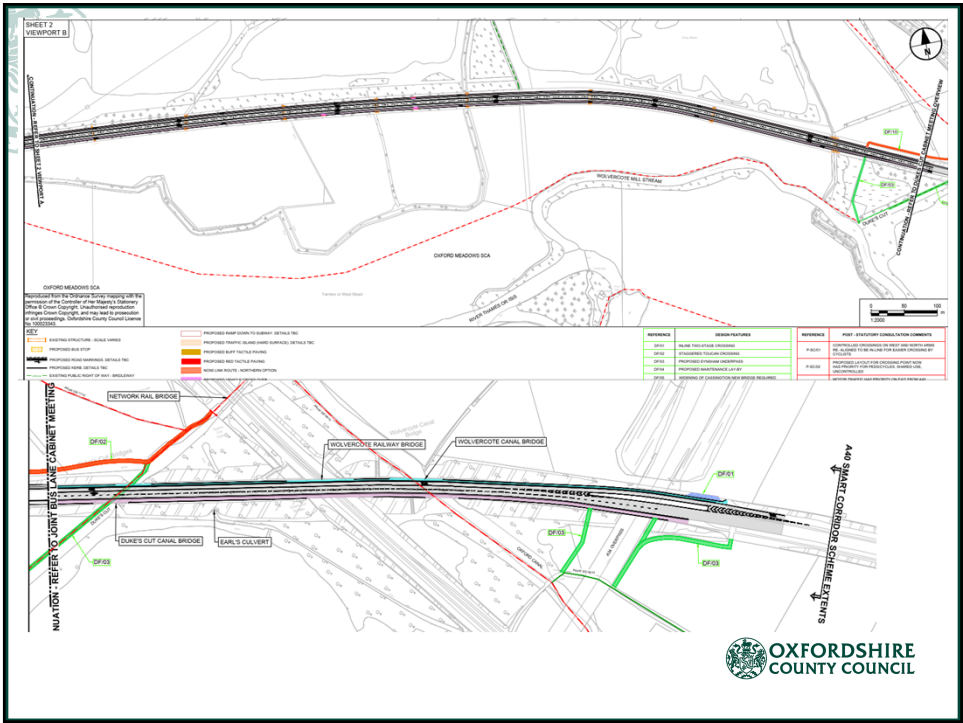


18






19



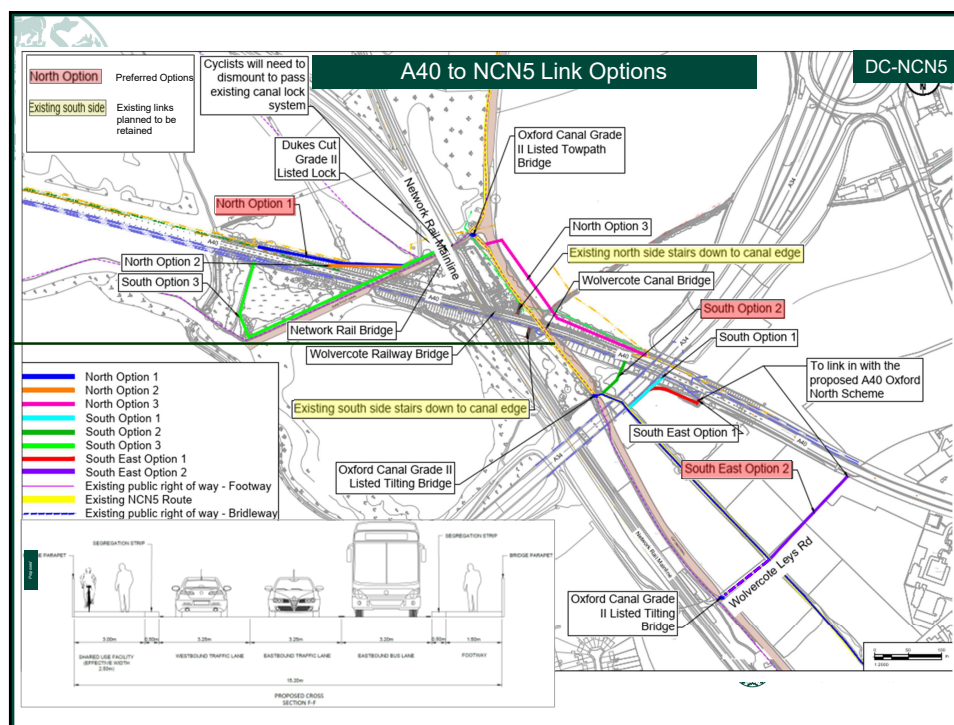
20

## A40 Duke's Cut

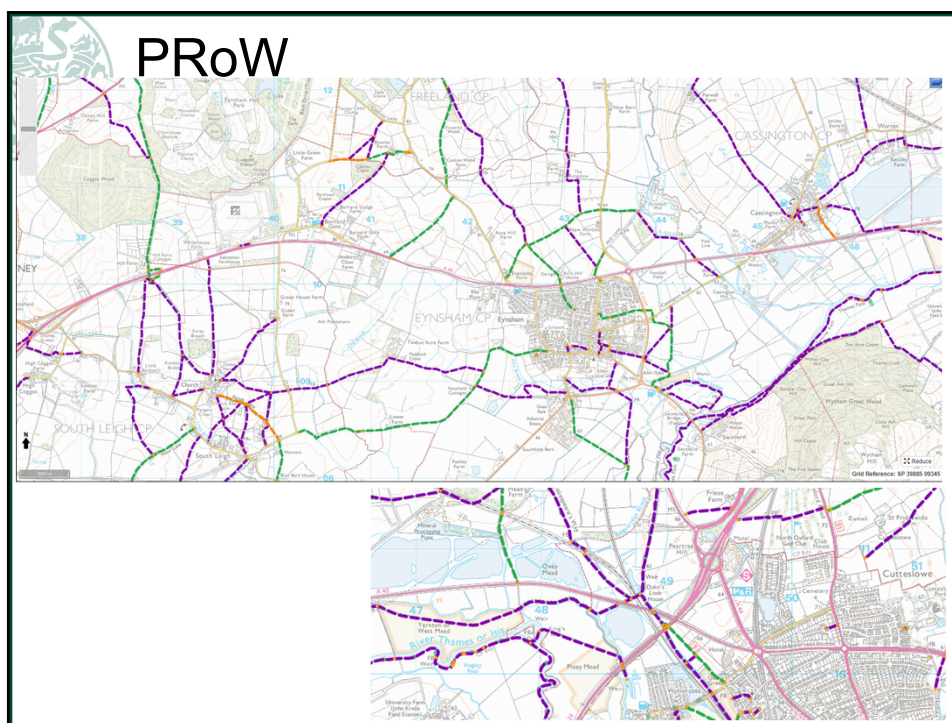
- Eastbound bus lane over the existing structures (Duke's Cut Canal Bridge, Wolvercote Railway Bridge, Wolvercote Canal Bridge, Earl's Culvert).
- Works to Wolvercote Railway Bridge to provide capacity to accommodate Eastbound bus lane.
- Installation and modification of Vehicle Restraint Systems (VRS) along some sections of the carriageway.
- Strengthening works to Wolvercote Railway Bridge to provide capacity to accommodate eastbound bus lane.
- The works include strengthening of weak verges, replacement of existing parapets with compliant VRS parapets and removal of inboard vehicle restraint barrier.
- Works to include strengthening of weak verges, replacement of edge beams and removal of inboard vehicle restraint barrier.
- Footpath along northside and shared cycle and pedestrian path along southside of A40.
- Shared path linking the A40 to National Cycle Network (NCN) Route 5 and the Oxford Canal Tow Path runs via the Oxford Canal Lock.
- No bridge widening works proposed.


**OXFORDSHIRE  
COUNTY COUNCIL**

21



22



23

## Project Update: A40 Oxford North


- Licence for Access agreed & signed with Thomas White Oxford (landowner)
- Enabling Works completed (24 Nov – 26 Feb 2021).
  - Site clearance, establish compound/welfare facilities, temporary footpaths and fencing
- Main construction works now commenced
- Completion – December 2021

Construction work area

**OXFORDSHIRE COUNTY COUNCIL**


24





# Indicative programme

|                |                                  |
|----------------|----------------------------------|
| April 2021     | Scoping opinion received         |
| May 2021       | Public engagement                |
| September 2021 | Submit planning application      |
| Q1 2022        | Target application decision date |
| Q2 2022        | Enabling works start             |
| Q4 2022        | Construction starts              |
| Q1 2024        | Construction complete            |



25



# Q & A



26



# Thank you

